



AGM 770  
(46TH AVE S)

### DIG# PPE-16

Valve 780  
(Magellan ROW)

#### Anomaly Excavation Info

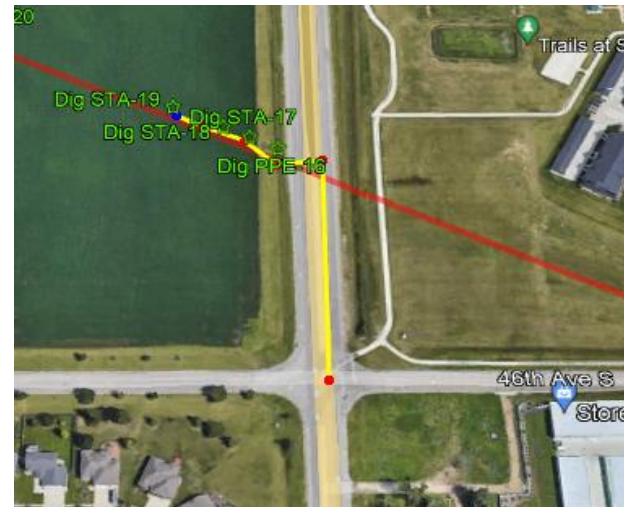
Pipeline Co.	MAGELLAN MIDSTREAM PARTNERS
Pipeline Name	Alexandria - Fargo #2-8IN 2022 SMFL
Dig Number	PPE-16
Anomaly Station #	5169+50
Anomaly Odometer WC	519,501.40
Depth of Cover to Pipe	72"
Survey Method	Manual Chain
HCA (Y/N)	N
Alignment Sheet	AGA-1619
Tract Number	6109
Legal Description	T139N-R48W; NW29
County/Parish	Clay
State	Minnesota

#### GPS Data

Latitude	46.82693852
Longitude	-96.76813553
Elevation (Ft. - MSL)	914'
Datum	WGS-84

#### Surveyor Contact Info

Surveyor	Tanner Litterell
Survey Date	9/9/23
Surveyor Phone	405-326-8296
Surveyor Email	<a href="mailto:litterell@moorepls.com">litterell@moorepls.com</a>



#### Directions

From the intersection of 8TH ST and 46TH ST S, drive N approximately 500' and turn W onto the Magellan ROW where DIG PPE-16 is located. DIG PPE-16 is located on Magellan ROW and is marked with pink ribbon and pink stakes.

#### Staking Notes

Manually pulled chain 937.5' D/S of AGM 770 to Dig PPE-16. Dig PPE-16 is marked with pink stakes and pink ribbon.