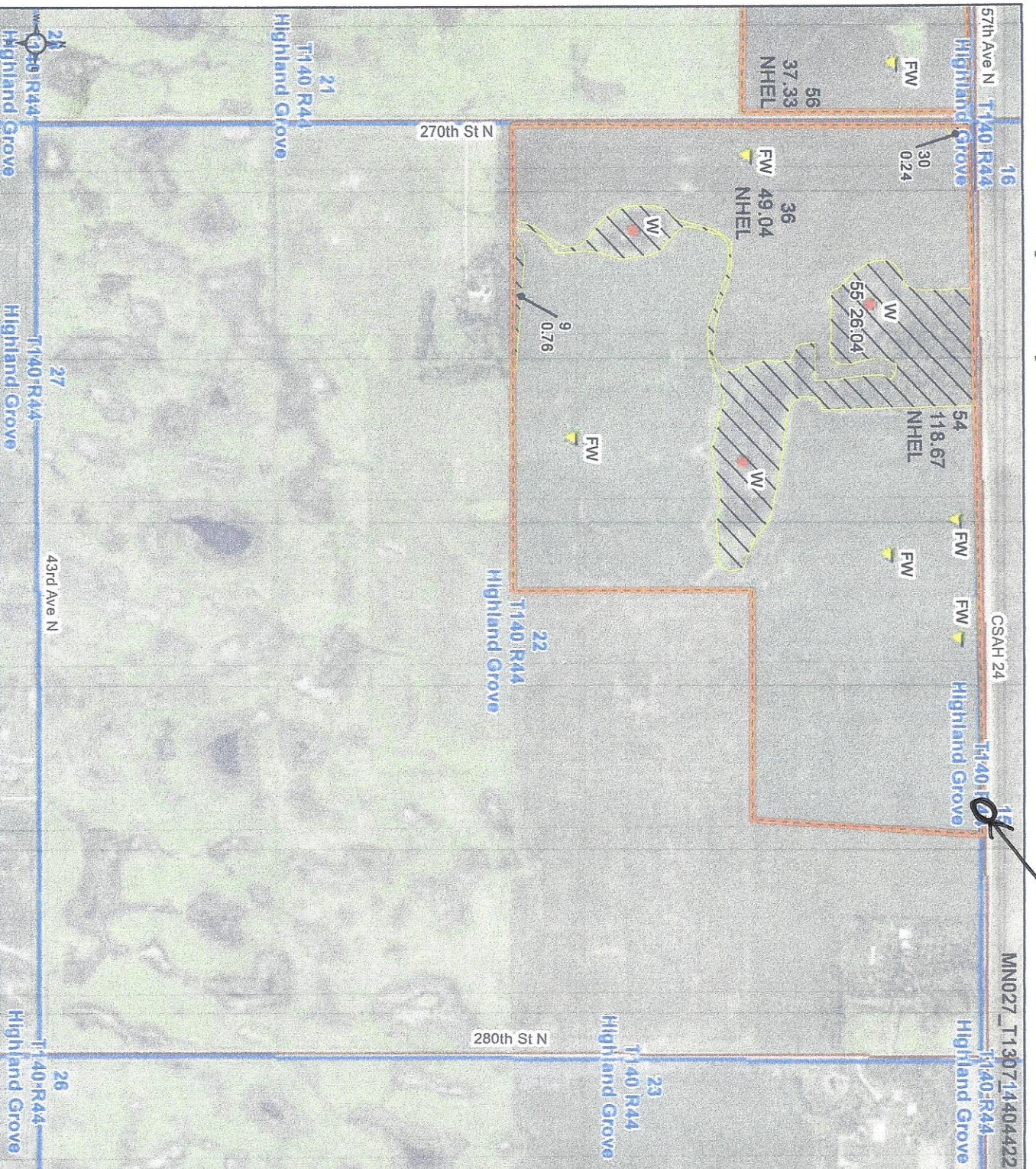


Proposed Field Approach



Farm 732

Tract 1307

2024 Program Year

Map Created April 24, 2024

1404422



Unless otherwise noted:

Shares are 100% operator
Crops are non-irrigated
Corn = yellow for grain

Soybeans = common soybeans for grain

Wheat = HRS, HRW = Grain

Sunflower = Oil, Non-Oil = Grain

Oats and Barley = Spring for grain

Rye = for grain

Peas = process




Alfalfa, Mixed Forage AGM, GMA, IGS = for forage

Beans = Dry Edible





MAG = for GZ

Canola = Spring for seed

Common Land Unit

-  Non-Cropland
-  Cropland
-  Tract Boundary

Wetland Determination Identifiers

-  Restricted Use
-  Limited Restrictions
-  Exempt from Conservation
-  Compliance Provisions

Tract Cropland Total: 205.04 acres

United States Department of Agriculture (USDA) Farm Service Agency (FSA) maps are for FSA Program administration only. This map does not represent a legal survey or reflect actual ownership; rather it depicts the information provided directly from the producer and/or National Agricultural Imagery Program (NAIP) imagery. The producer accepts the data as is and assumes all risks associated with its use. USDA-FSA assumes no responsibility for actual or consequential damage incurred as a result of any user's reliance on this data outside FSA Programs. Wetland identifiers do not represent the size, shape, or specific determination of the area. Refer to your original determination (CPA-026 and attached maps) for exact boundaries and determinations or contact USDA Natural Resources Conservation Service (NRCS). This map displays the 2021 NAIP imagery.