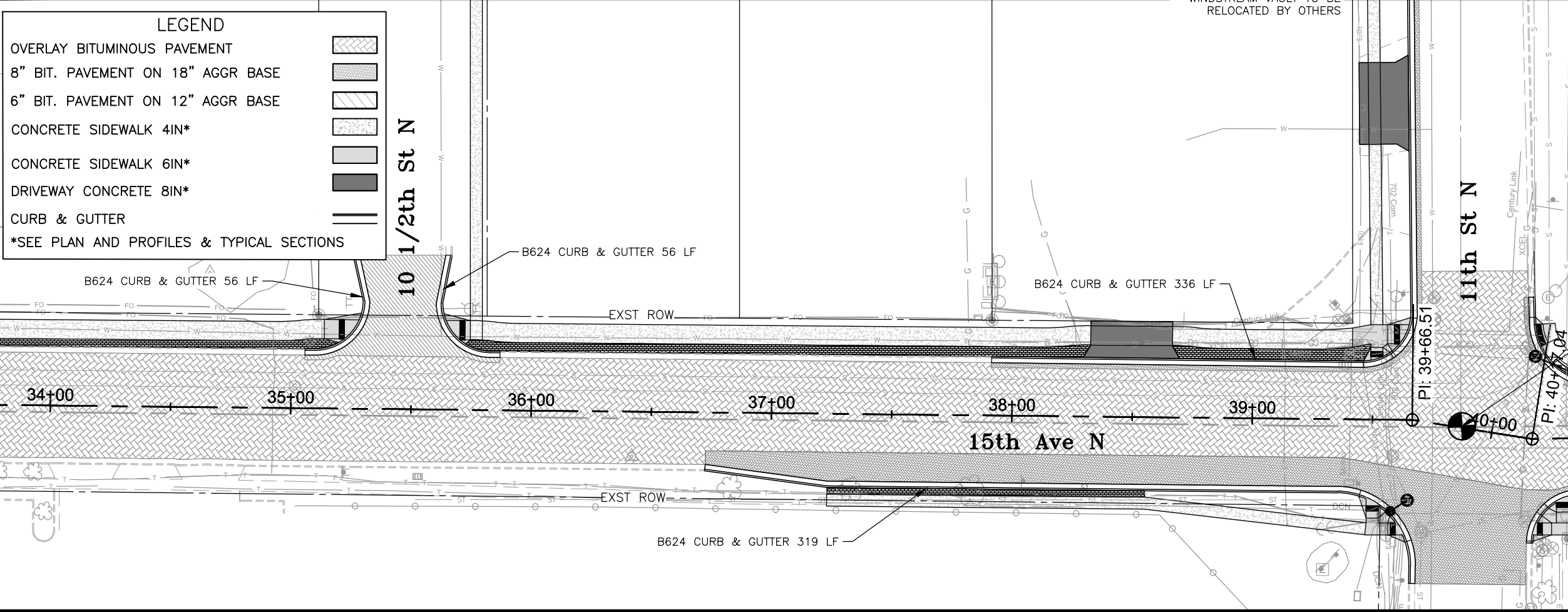
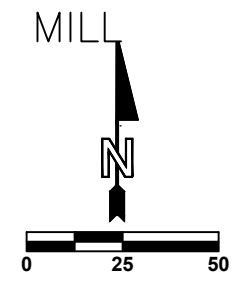
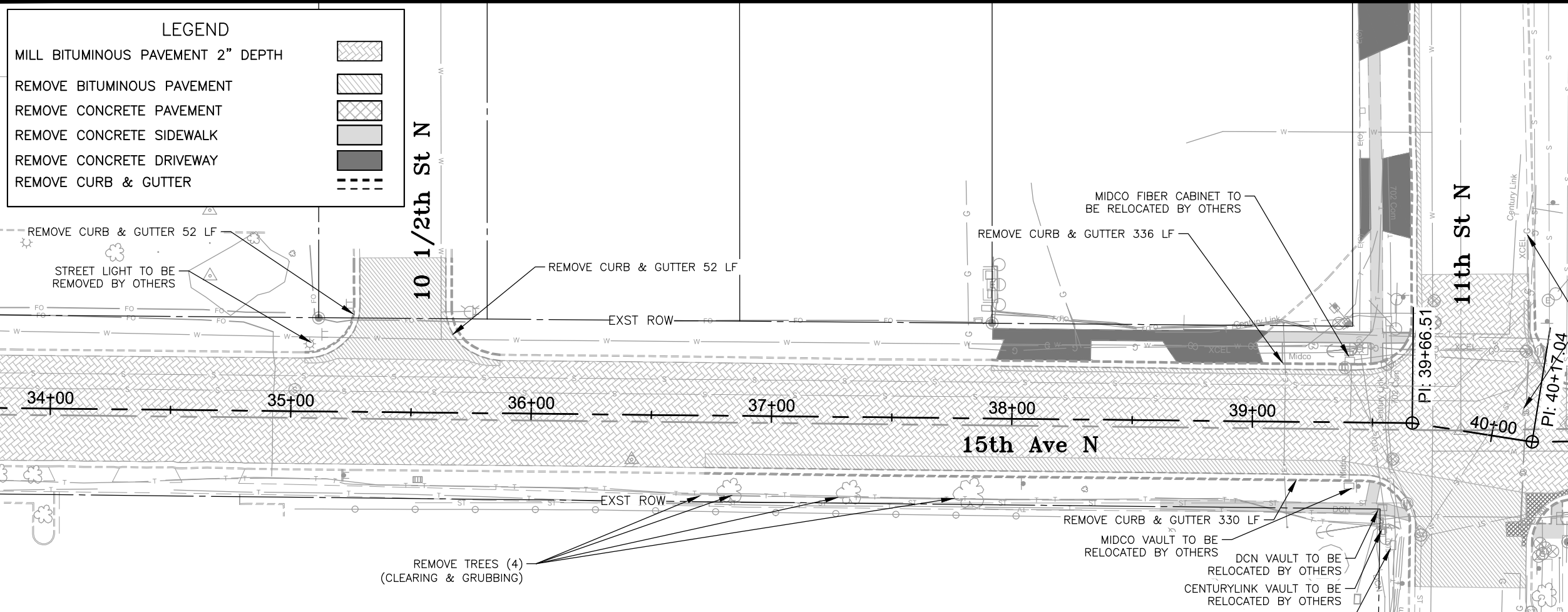


\\rgo-files01\p\City\MN\Moorehead\14416107\CAD\Design\Plans\Sections\Mill&Overlay\14416107_Mill&Overlay - 4/23/2018 9:53 AM



OVERLAY

LEGEND

MILL BITUMINOUS PAVEMENT 2" DEPTH	[Hatched pattern]
REMOVE BITUMINOUS PAVEMENT	[Diagonal lines]
REMOVE CONCRETE PAVEMENT	[Cross-hatched pattern]
REMOVE CONCRETE SIDEWALK	[Stippled pattern]
REMOVE CONCRETE DRIVEWAY	[Solid grey fill]
REMOVE CURB & GUTTER	[Dashed line]

LEGEND

OVERLAY BITUMINOUS PAVEMENT	[Hatched pattern]
8" BIT. PAVEMENT ON 18" AGGR BASE	[Diagonal lines]
6" BIT. PAVEMENT ON 12" AGGR BASE	[Cross-hatched pattern]
CONCRETE SIDEWALK 4IN*	[Stippled pattern]
CONCRETE SIDEWALK 6IN*	[Solid grey fill]
DRIVEWAY CONCRETE 8IN*	[Solid dark grey fill]
CURB & GUTTER	[Double line]
*SEE PLAN AND PROFILES & TYPICAL SECTIONS	

KLJ m
DEPARTMENT OF TRANSPORTATION

MOOREHEAD ENGINEERING
SM
DRAWN BY AV CHECKED BY APPROVED BY

STATE AID PROJECT NO. SP 144-129-005 SAP 014-603-012 SP 1407-27

PRELIMINARY

Mill & Overlay
Roadway rehabilitation and pedestrian facilities along 15th Avenue N from the Red River to 28th Street N

\\rgo-files01\p\City\MN\Moohead\14416107\CAD\Design\Plans\Mill&Overlay\14416107_Mill&Overlay - 4/23/2018 9:56 AM

LEGEND

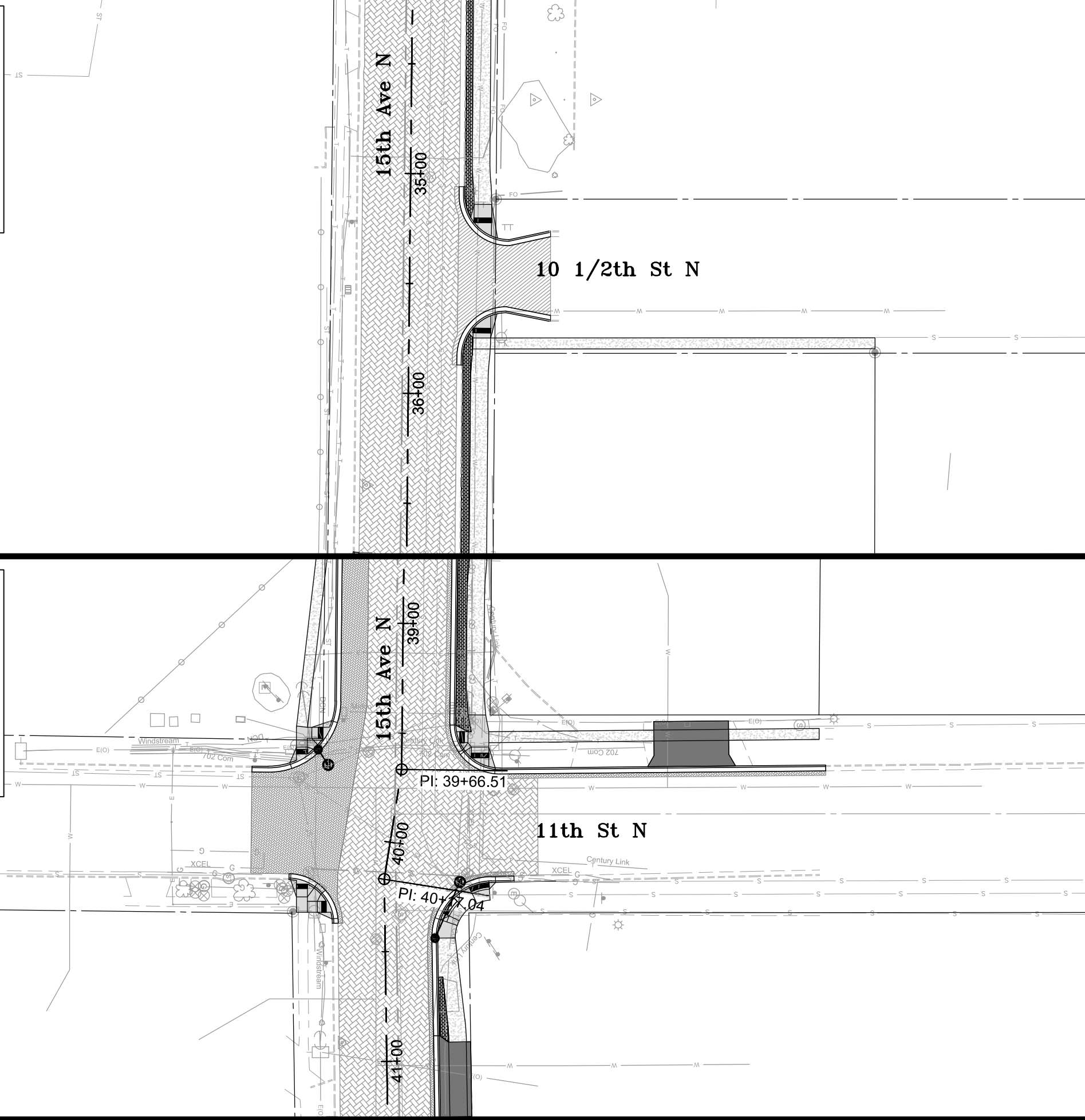
- OVERLAY BITUMINOUS PAVEMENT
- 8" BIT. PAVEMENT ON 18" AGGR BASE
- 6" BIT. PAVEMENT ON 12" AGGR BASE
- CONCRETE SIDEWALK 4IN*
- CONCRETE SIDEWALK 6IN*
- DRIVEWAY CONCRETE 8IN*
- CURB & GUTTER

*SEE PLAN AND PROFILES & TYPICAL SECTIONS

LEGEND

- OVERLAY BITUMINOUS PAVEMENT
- 8" BIT. PAVEMENT ON 18" AGGR BASE
- 6" BIT. PAVEMENT ON 12" AGGR BASE
- CONCRETE SIDEWALK 4IN*
- CONCRETE SIDEWALK 6IN*
- DRIVEWAY CONCRETE 8IN*
- CURB & GUTTER

*SEE PLAN AND PROFILES & TYPICAL SECTIONS



OVERLAY

OVERLAY

KLJ m
DEPARTMENT OF
TRANSPORTATION

MOOREHEAD
Engineering

SM
CHECKED BY
AV
DRAWN BY

SP 144-129-005 STATE AID PROJECT NO.
SP 014-603-012 STATE AID PROJECT NO.
SP 1407-27 STATE AID PROJECT NO.

PRELIMINARY

Mill & Overlay

Roadway rehabilitation and pedestrian facilities along 15th Avenue N
from the Red River to 28th Street N