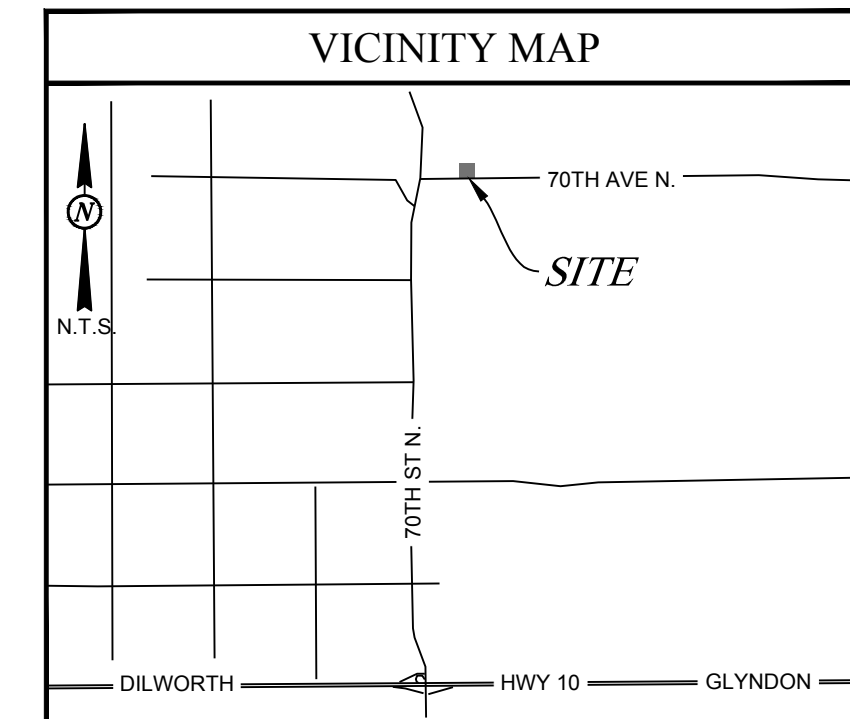
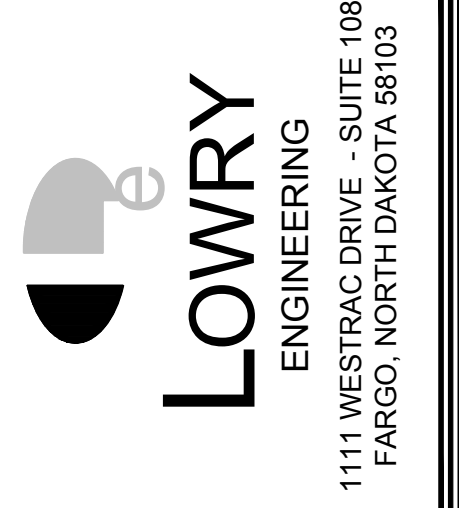


# ROBSON EQUESTRIAN FACILITY

7552 70TH AVE N.  
CLAY COUNTY, MINNESOTA

**OWNER REPRESENTATIVE**  
MORTON BUILDINGS, INC.  
ERIC ERIKSON  
1500 29TH AVE. SOUTH  
MOORHEAD, MN 56560  
PH: 218-233-1500  
EMAIL: Eric.Erikson@mortonbuildings.com

**CIVIL ENGINEER**  
LOWRY ENGINEERING  
ANDREW THILL, P.E.  
1111 WESTRAC DR., SUITE 108  
FARGO, ND 58103  
PH: 701-235-0199  
EMAIL: athill@lowryeng.com



SHEET INDEX	
C-1	OVERALL SITE PLAN
C-2	GENERAL NOTES & LEGEND
C-3	SURVEY OVERLAY & DEMOLITION PLAN
C-4	UTILITY PLAN
C-5	GRADING PLAN

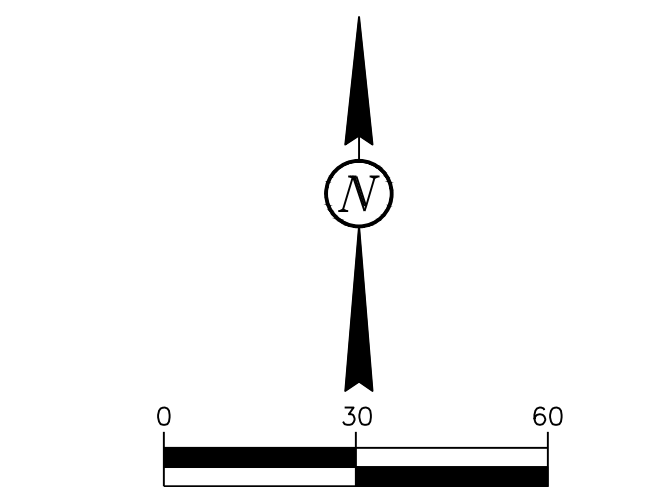
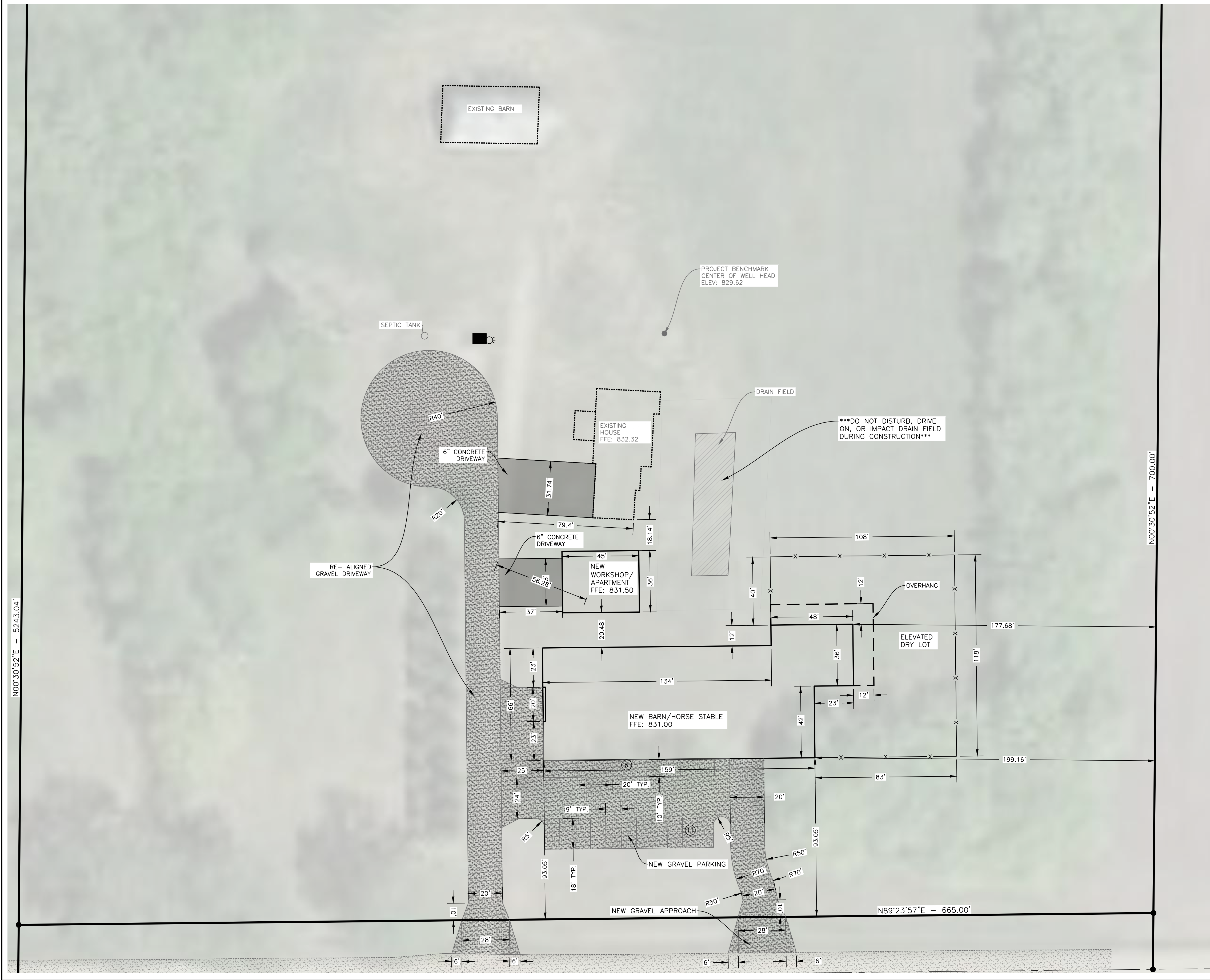
REVISIONS	
1	REVISIONS PER COUNTY NO. 1 - 11/5/2019

**ROBSON EQUESTRIAN FACILITY**  
**7552 70TH AVE N**  
**CLAY COUNTY, MN**

BENCHMARK: CENTER OF WELL HEAD LOCATED APPROXIMATELY 34 FEET NORTH OF NORTHEAST CORNER OF EXISTING HOUSE  
ELEVATION: 829.62

BASIS OF BEARING: CLAY COUNTY COORDINATE SYSTEM

GRAVEL APPROACHES WIDENED TO 28' IN ROW.



**CALL BEFORE YOU DIG**  
**MINNESOTA**  
UTILITIES UNDERGROUND LOCATION SERVICE  
1-800-252-1166

LE JOB #	19099
PROJECT DATE:	11/5/2019
CHECKED BY:	SAS
DRAWN BY:	SAS
APPROVED BY:	AJT
SHEET:	1 OF 5

OVERALL SITE PLAN

**C-1**

I:\0519\_08-41-18\AM C:\Users\eam\appdata\local\Temp\pub\Pub\11-4-2019\0809\_C.dwg