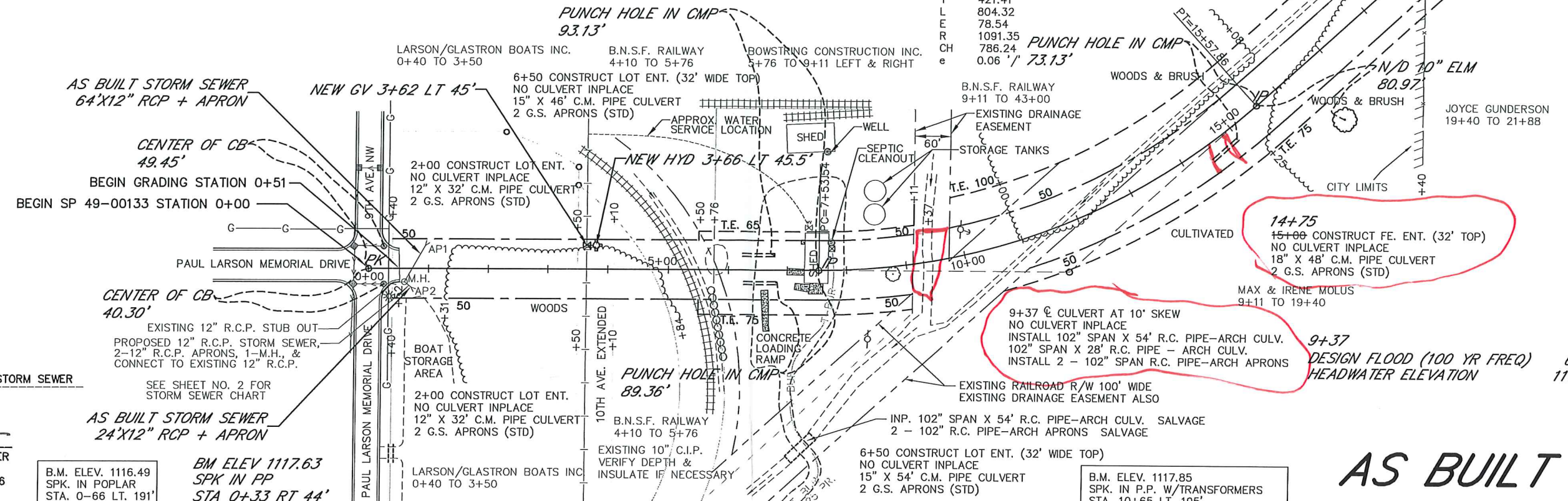


P.I. 11+74.95  
DELTA 42'13'36" LT.  
Dc 5'15'00"  
T 421.41  
L 804.32  
R 78.54  
CH 1091.35  
e 786.24  
0.06 '1' 73.13'



DONALD J. PROM 1-4-02 STORM SEWER  
REVISED BY DATE

*[Signature]*  
LICENSED PROFESSIONAL ENGINEER  
DATE 7/13/13 LICENSE NO. 18286

B.M. ELEV. 1116.49  
SPK. IN POPLAR  
STA. 0-66 LT. 191'

B.M. ELEV 1117.63  
SPK IN PP  
STA 0+33 RT 44'

B.M. ELEV. 1117.85  
SPK. IN P.P. W/TRANSFORMERS  
STA. 10+65 LT. 195'

# AS BUILT 2002

